



Priory Road, London, W4 5JA

Guide Price £900,000

WHITMAN & CO.

SALES · LETTINGS · COMMERCIAL

- Pretty Victorian house
- Potential to extend STPP
- 5-minute walk to Chiswick High Road
- Quiet residential street
- Private garden
- Fantastic transport links

Tenure - Freehold
Local Authority - Ealing
Council Tax - Band E

THE PROPERTY

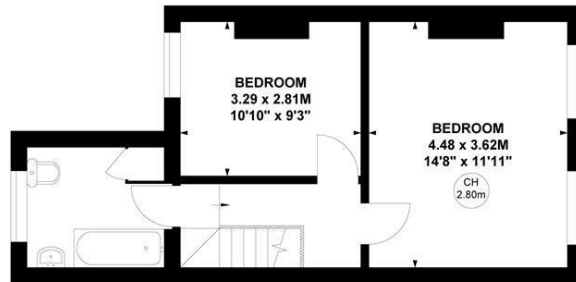
A pretty two-bedroom Victorian house ideally located in this quiet residential street offering close proximity to all amenities. The house comprises two double bedrooms, large loft, white bathroom suite, 25' through reception room, fully fitted kitchen, private landscaped garden. The house can be extended into the loft and on the ground floor STPP. Priory Road is a 5-minute walk from Chiswick High Road's shops, cafes, pubs, and restaurants. Transport links include Turnham Green and Chiswick Park stations, local bus routes and the A4/M4 in and out of London.



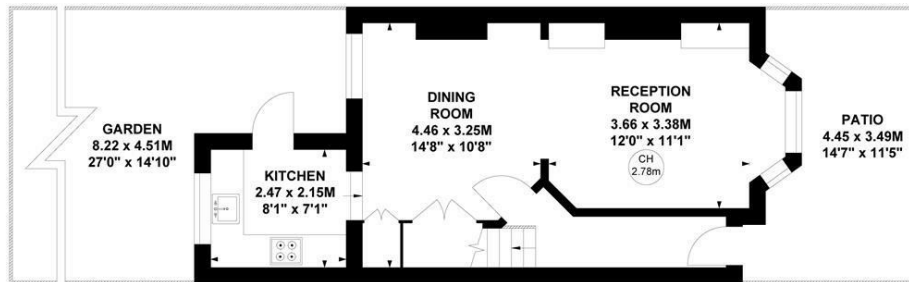
Priory Road, W4

Approximate gross internal area
75.90 sq m / 817 sq ft

Key :
CH - Ceiling Height



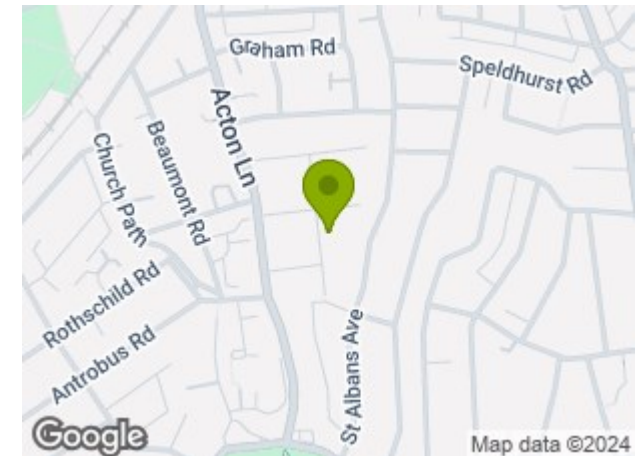
First Floor



Ground Floor

Not to scale, for guidance only and must not be relied upon as a statement of fact.
All measurements and areas are approximate only

SITUATION



5-7 Turnham Green Terrace, Chiswick, London, W4 1RG

Tel 020 8747 8800

E-mail sales@whitmanandco.com

Website www.whitmanandco.com

